



Push

Refuge



TECHN
SWITCH

EVC SYSTEM

Fire Telephone

Disabled Refuge

One Integrated System
Technoswitch EVCS

Emergency Assistance Alarm





The Technoswitch EVCS is a comprehensive Emergency Voice Communication System that combines Fire Telephone, Disabled Refuge and Emergency Assistance Alarm Systems in one fully-integrated robust network.

The range encompasses compact, elegant touchscreen master stations, system expander panels, repeater panels with compatible outstations for all applications.

Design of the products is paramount, with aesthetics and engineering functionality taking precedence –

- Large system capacity with up to 512 lines
- Compact master stations
- Modern touchscreen user interface
- Simple configuration and installation
- Dual redundant fault tolerant network
- Shared network offers installation savings

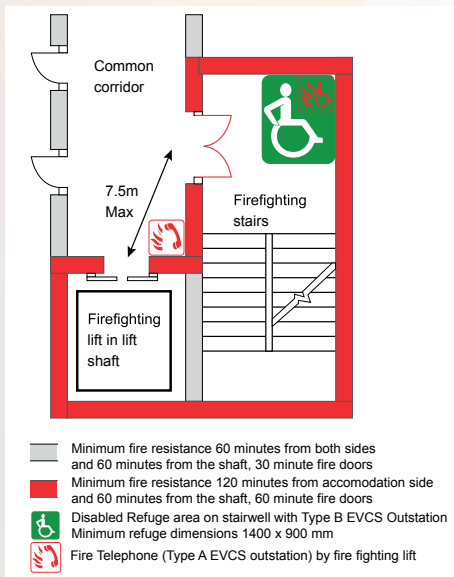


FIRE TELEPHONE

For use by the fire and rescue service during an evacuation so the officer at the fire control centre can communicate with the other officers to control the evacuation, and for use by the fire and rescue services after an evacuation to assist fire-fighting. They are particularly helpful as a backup to the fireman's radio systems which can fail to operate during a fire in many tall buildings due to the large amount of steel and the fire "corona" effect on radio broadcasts.

Fire Telephone Systems are needed in buildings that require "Phased Evacuation" and Voice Alarm Systems.

For reference consult BS9999:2017.



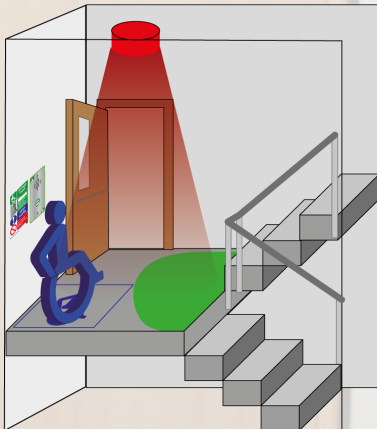
DISABLED REFUGE

How do people of limited mobility leave a building during an emergency?

When people enter the building, they usually use lifts and escalators to ascend to upper floors. However, during an emergency, these may be unavailable, and protected stairwells are used as a means of escape. It is required that there is a strategy for evacuating disabled people in these circumstances.

Anyone requiring assistance can congregate in a place of relative safety. These places are referred to as refuge areas where they can use the Emergency Voice Communication System (EVCS) to communicate with building management. They can explain their situation, and if needed, be assisted in leaving the building by trained personnel using specialist equipment.

The National Building Regulations and Building Standards Part S (SANS 10400-S) deals with facilities for disabled people and includes access to public areas. These features are referred to as “Accessible Features” and are meant to ensure that accommodation and transport is accessible for persons with disabilities.



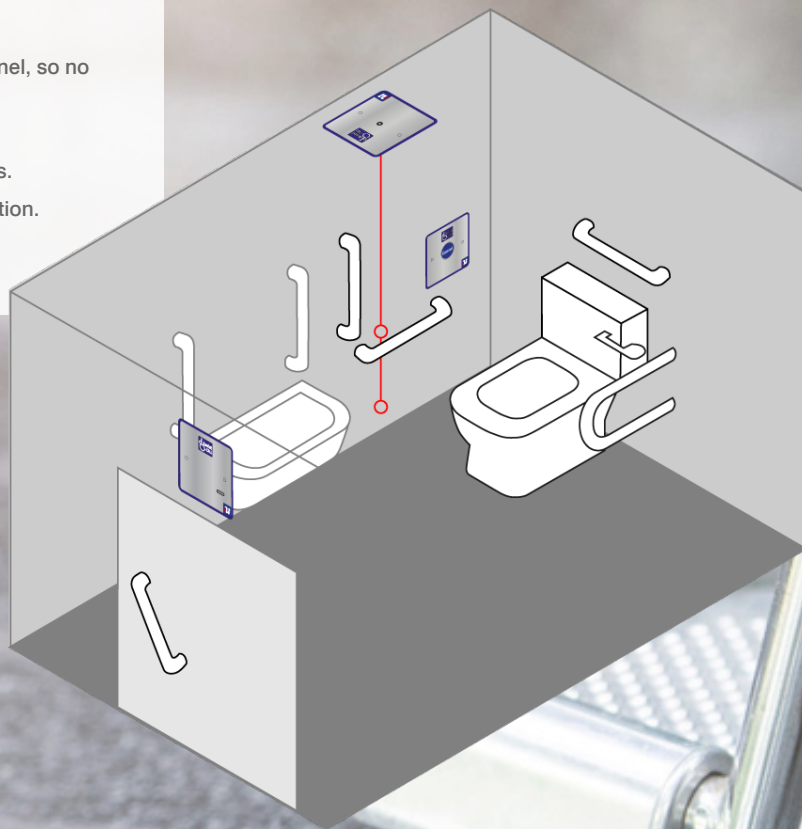
ACCESSIBLE TOILET

The Technoswitch ASSIST CALL Accessible Toilet Kit is suitable for all buildings requiring accessible toilets, changing areas, and showers.

The Equality Act requires an Emergency Assistance Alarm to be installed in each accessible area. The ASSIST CALL accessible toilet kit provides a fully compliant solution that allows users of these facilities to call for help. The ASSIST CALL accessible toilet kit is fully integrated into the Technoswitch EVCS, allowing building staff to respond to an alarm from any of the multiple master stations

ASSIST CALL Accessible Toilet Kit features

- Clear acoustic and visual feedback.
- High-quality stainless-steel finish.
- Fully fault monitored.
- Powered from local master station or expander panel, so no mains required.
- Acknowledgement feature.
- Staff response from any of multiple master stations.
- Can be attached to the same line as Type B outstation.
- BS 8300 compliant.



ACCESSIBLE BEDROOM

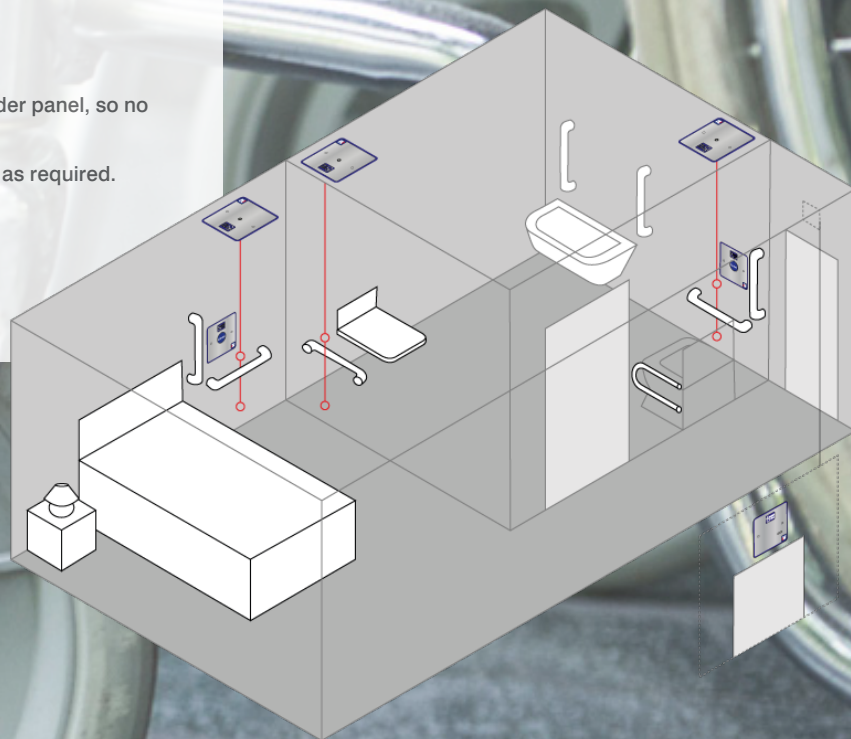
The Technoswitch ASSIST CALL Bedroom Kit is suitable for buildings that require accessible bedrooms, such as:

- Hotels
- Student Accommodation
- Residential Accommodation

The Technoswitch EVCS can be used with the ASSIST CALL bedroom kit. This provides a solution for the emergency assistance alarm system for the accessible bedrooms that is fully integrated into the Technoswitch EVCS. The Technoswitch EVCS can have multiple master stations from which building staff can respond to any alarm.

ASSIST CALL Bedroom Kit features

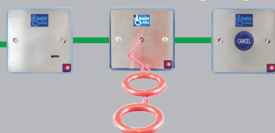
- Clear acoustic and visual feedback.
- High-quality stainless-steel finish.
- Fully fault monitored.
- Powered from local master station or expander panel, so no mains required.
- Has additional pull cords and cancel plates, as required.
- Acknowledgement feature.
- Staff response from any of multiple master stations.



ASSIST CALL

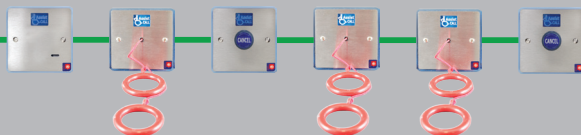
VS-EVS-ACWC

The ACWC kit is designed to provide the alarm system for an accessible toilet to comply with BS8300 and Building Regulations



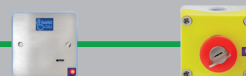
VS-EVS-ACBK

The ACB kit is designed to provide the alarm system for an accessible bedroom to comply with BS8300 and Building Regulations



VS-EVS-ACODP & VS-EVS-ACCP56

The ACCP56 is a latching mushroom button and can be used as a pool alarm



VS-EVS-ACODP; VS-EVS-ACCNP66 & VS-EVS-ACCP66

Waterproof Call and Cancel Buttons for use in wet rooms and showers



VS-EVS-EX8

System Expander Panel

Adds another 8 lines for outstations to a system, up to 63 can be added to a system – giving a total of 512 outstations



VS-EVS-ACM8

ASSIST Call Master

A touchscreen Repeater panel for accessible toilets and bedrooms – complete with 8 lines for outstations



VS-EVS-ACR

A touchscreen Repeater mounted on a double gang plate for accessible toilets and bedrooms – for fitting in reception or management offices



DISABLED REFUGE



VS-EVS-OSB

Type B Refuge Point for use in public areas



VS-EVS-OSB and VS-EVS-ACWC

Type B Refuge Point with accessible toilet alarm attached using a single line



VS-EVS-ILBF / VS-EVS-ILBS

Type B Refuge Point with integral induction loop (flush & surface mount options)



VS-EVS-IPB

Weather resistant Type B Refuge Point – for external refuge locations



VS-EVS-EX8

System Expander Panel

VS-EVS-PCGUI

Graphics package for the Technoswitch EVCS Network – ideal for large or complicated sites



FIRE TELEPHONE



VS-EVS-OSA

A Type A Fire Telephone for wardens and fire fighters to use in an emergency



VS-EVS-OSC

A combined Type A and Type B Outstation – typically for fire fighting lift lobbies



VS-EVS-IPA

Weather resistant Type A Fire Telephone – for external locations



VS-EVS-TMS8SS

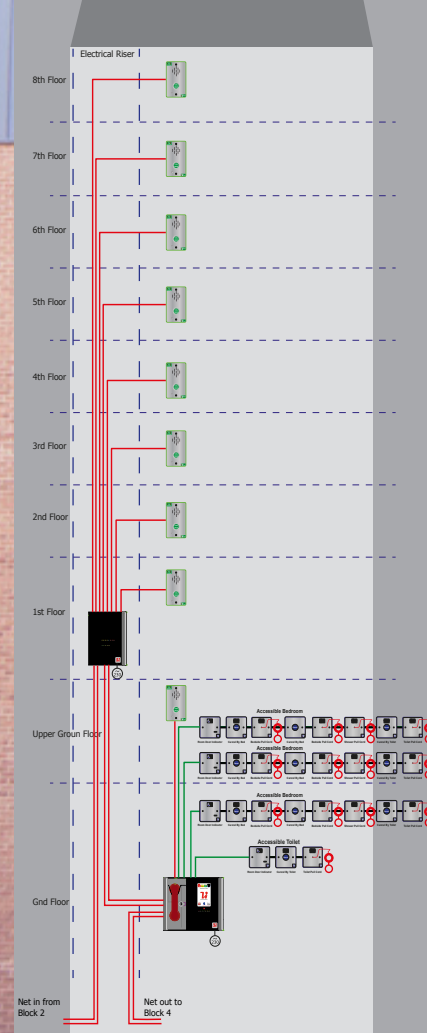
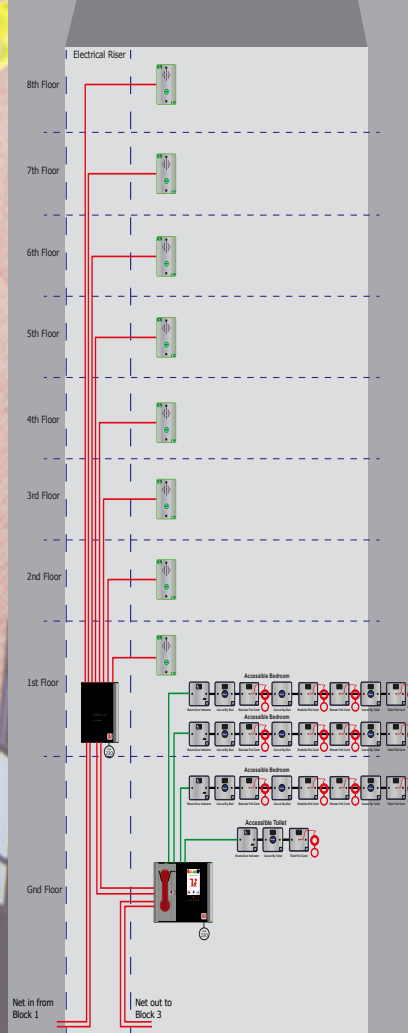
Network Touchscreen with stainless steel option allowing refuge and fire telephone calls to be received and to acknowledge accessible alarms

DESIGN EXAMPLE

Parkview Student Village – 2018

A 1261 bed student accommodation for Newcastle University

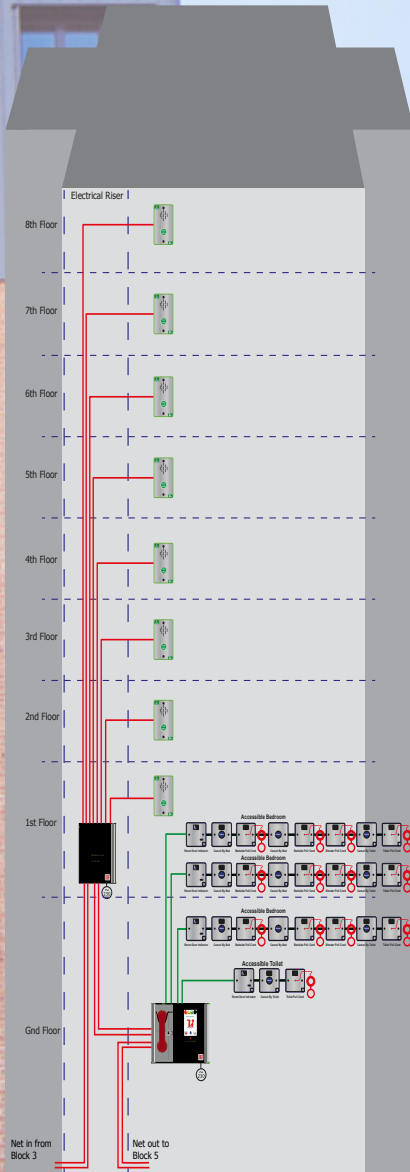
Installed by CDS Security & Fire – Durham



The flexibility of the Technoswitch EVCS allows each block to have a panel that responds to the local block refuge points and accessible bedrooms.

The panel in the Security Office in Block 1 responds to all refuge points and accessible alarms site-wide.

This functionality is supplied as standard and simply programmed on site using the Technoswitch EVCS Config spreadsheet.



OUTSTATION RANGE



VS-EVS-OSA
Type A Fire Telephone



VS-EVS-OSB
Type B Refuge Outstation



VS-EVS-OSC
Combined Type A
and B Outstation



VS-EVS-ILBF / VS-EVS-ILBS
Type B Refuge Outstation
c/w induction loop (flush &
surface mount options)



VS-EVS-IPA
Weatherproof Type A
IP66 Fire Telephone



VS-EVS-IPB
Weatherproof Type B
Refuge Outstation



VS-EVS-OSR
Roaming Fire Telephone &
VS-EVS-OSJ
Jack Point

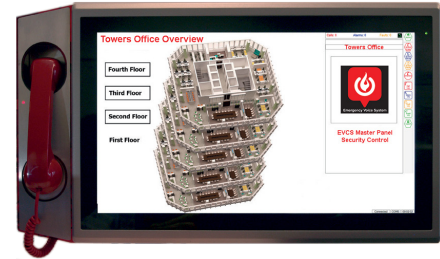
TECHNOSWITCH EVCS PANEL RANGE



VS-EVS-TMS8
Touchscreen Master Station



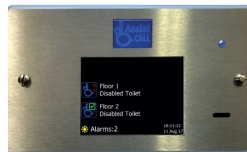
VS-EVS-EX8
System Expander Panel



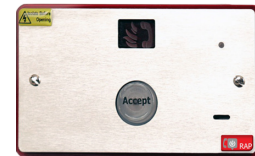
VS-EVS-PCGUI
Graphics System



VS-EVS-ACM8
ASSIST CALL Master Station

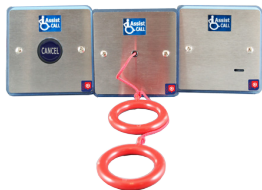


VS-EVS-ACR
ASSIST CALL Repeater

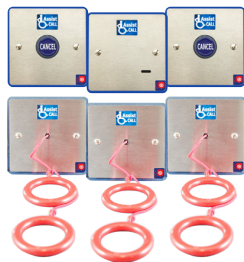


VS-EVS-RAP
Remote Alarm Panel

ASSIST CALL RANGE



VS-EVS-ACWC
ASSIST CALL Accessible
Toilet Alarm Kit



VS-EVS-ACBK
ASSIST CALL Accessible
Bedroom Kit



VS-EVS-ACODP
ASSIST CALL Over
Door Plate



VS-EVS-ACACNP
ASSIST CALL Ancillary
Cancel Plate



VS-EVS-ACPC
ASSIST CALL
Pull Cord Plate



VS-EVS-ACCP
ASSIST CALL Plate



VS-EVS-ACCNP
ASSIST CALL
Cancel Plate



VS-EVS-ACSIP
ASSIST CALL Switch
Interface Plate

WEATHERPROOF RANGE



VS-EVS-ACCNP66
ASSIST CALL Weatherproof
IP66 Cancel Button



VS-EVS-ACCP66
ASSIST CALL Weatherproof
IP66 Call Button



VS-EVS-ACCP56
ASSIST CALL Weatherproof
IP56 Mushroom Call Button

CONFIGURATION

- Simple configuration via spreadsheet
- No custom software
- Upload via supplied Micro SD Card
- Configuration option via touchscreen
- Entire site configuration from a single point

The powerful Technoswitch EVCS system is both flexible and simple to commission and configure, partly thanks to the Technoswitch EVCS Config spreadsheet.

Using a spreadsheet, bespoke software does not need to be preloaded onto the commissioning engineer's computer – in fact, the configuration can be completed before attending the site.

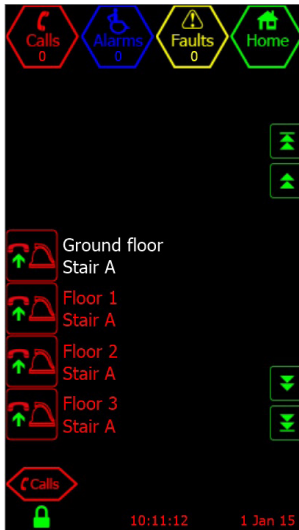


Installers can display their own logo, it is simply loaded as a Bitmap via the Micro SD card.

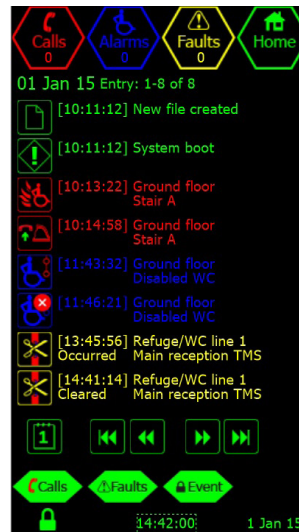
Project							Panel 1 config		
Site name							Name row 1		
Road Runner Security Offices							Security		
Installer							Name row 2		
ACME							Admin Suite		
Contact							Type		
Wile E Coyote							TMS		
Version 1.1							Net		
Outstation text							Both		
Alarm text							Day/Night/Fault		
Fault text							Panel 1		
Line	Used	Row 1	Row 2	Row 1	Row 2	Row 1	Row 2		
Panel 1									
1	EVCS	Ground Floor	North Stair	Line 1	Panel 1	Ground Floor EVCS	Main Entrance	Yes	Yes
2	EVCS	Floor 1	North Stair	Line 2	Panel 1	Floor 1 EVCS	Stairwell	Yes	Yes
3	EVCS	Floor 2	North Stair	Line 3	Panel 1	Floor 2 EVCS	Stairwell	Yes	Yes
4	EVCS	Floor 3	North Stair	Line 4	Panel 1	Floor 3 EVCS	Stairwell	Yes	Yes
5	Assist	Line 5	Panel 1	Ground Floor	Public WC	Ground Floor WC	Panel 1	Yes	Yes
6	Assist	Line 6	Panel 1	Floor 1	Bedroom 102	Floor 1 WC	Panel 1	Yes	Yes
7	Assist	Line 7	Panel 1	Floor 2	Bedroom 202	Floor 2 WC	Panel 1	Yes	Yes
8	Assist	Line 8	Panel 1	Floor 3	Bedroom 302	Floor 3 WC	Panel 1	Yes	Yes
Panel 2									
1	EVCS	Floor 4	North Stair	Line 1	Panel 2	Floor 4 EVCS	Expander 1 Rm400	Yes	Yes
2	EVCS	Floor 5	North Stair	Line 2	Panel 2	Floor 5 EVCS	Expander 1 Rm400	Yes	Yes
3	EVCS	Floor 6	North Stair	Line 3	Panel 2	Floor 6 EVCS	Expander 1 Rm400	Yes	Yes
4	Both	Floor 7	North Stair	Floor 7	Bedroom 732	Floor 7 EVCS/WC	Expander 1 Rm400	Yes	Yes
5	Assist	Line 5	Panel 2	Floor 4	Bedroom 402	Floor 4 WC	Expander 1 Rm400	Yes	Yes
6	Assist	Line 6	Panel 2	Floor 5	Bedroom 502	Floor 5 WC	Expander 1 Rm400	Yes	Yes
7	Assist	Line 7	Panel 2	Floor 6	Bedroom 602	Floor 6 WC	Expander 1 Rm400	Yes	Yes
8	Assist	Line 8	Panel 2	Floor 7	Bedroom 702	Floor 7 WC	Expander 1 Rm400	Yes	Yes

USER EXPERIENCE

The Technoswitch EVCS Master Stations system uses a 4.3" touchscreen display which is orientated vertically like a smart phone. Outstations can be dialled and incoming calls answered simply by lifting the handset and pressing on the screen icon, as you would with a smart phone.



A comprehensive system log is provided which the user can view. Each entry is colour coded between calls, alarms, events and faults. These entries can be filtered and viewed on a day by day basis. If required, the log can be taken from the micro SD card and downloaded as a CSV file so that it can be printed or emailed.



OUR VISION, MISSION & VALUES

VISION

Saving lives and assets.

MISSION

To deliver innovative fire detection and suppression solutions by providing reliable products and by sharing our expertise with our partners.

OUR VALUES

- **INTEGRITY**
We act with integrity towards our colleagues, customers and suppliers.
- **TEAMWORK**
We work as a team to accomplish our goals and celebrate these together.
- **CUSTOMER COMMITMENT**
We value our customer and strive to deliver on our commitments.
- **SUSTAINABILITY**
We endeavour to meet our financial, social and environmental obligations.
- **KNOWLEDGE**
We pursue growth and learning.

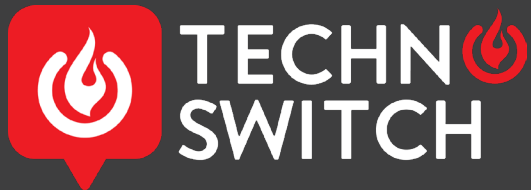


OUR QUALITY POLICY

Technoswitch is committed to developing, implementing and continually improving a Quality Management System in accordance with the ISO 9001:2015 requirements.

As part of that commitment, Technoswitch endeavours to:

- Listen to our customers and strive to deliver approved, reliable products and services that meet customer expectations.
- Achieve increased market penetration in other African territories through the timely supply and support of quality fire detection and suppression products.
- Adhere to the statutory and legal requirements applicable to our business.
- Continuously offer learning opportunities to uplift and promote a positive workforce.
- Implement and maintain healthy, ethical financial policies to create a stable financial backbone.
- Continually promote a quality culture within the organisation to support the mission and vision of the company.
- Achieve and maintain SAQCC accreditation of our external training courses and thereby technically uplifting our customer base and reducing the number of on-site technical enquiries.
- Build the Technoswitch brand as the leading and preferred manufacturer and supplier of world-class fire detection and suppression products in sub-Saharan Africa, thereby increasing customer base, loyalty and retention.
- Provide professional and accurate technical support services to customers and staff, thereby ensuring the effective and successful implementation of Technoswitch systems.
- Provide all our customers with accurate, on-time deliveries by ensuring our stock is well controlled, organised and clearly identified with a minimum of stock discrepancies.



JOHANNESBURG – HEAD OFFICE

Cussonia Park, 3 Ridge Road
Laser Park, Johannesburg, 2170
South Africa

T +27 (0)11 794 9144

E info@technoswitch.co.za

GPS -26.078824, 27.920198

CAPE TOWN

Tyger Terraces II
Block 2B, DJ Wood Street
Bellville Business Park, Bellville, 7530

T +27 (0)21 948 4575

GPS -33.900347, 18.609960

DURBAN

Colchester Building
Essex Gardens Office Park
1 Nelson Road, Westville, 3629

T +27 (0)31 266 8843

GPS -29.830878, 30.950067

www.technoswitch.co.za