



EMERGENCY VOICE EVACUATION SYSTEMS (EVCS) EMERGENCY ASSIST ALARM



EMERGENCY ASSIST ALARM

DESCRIPTION

All Technoswitch Emergency Voice Communications Systems (EVCS) are designed to comply fully with the requirements of BS 5839-9:2011 for use as a disabled refuge system (DRS), with integrated Emergency Assist Alarm System. The Emergency Assist kit provides a BS 8300 compliant accessible toilet solution including the "Acknowledge" signalling required for remote locations.

The Emergency Assist Alarm provides a simple solution to integrating emergency assist alarm call systems within an EVCS, providing a single display point for all disabled calls within a building.

It can be used on a dedicated line, or may share a line with the VS-EVS-OSB disabled refuge Outstation (as long as fire rated cable is used), where operation of the refuge point overrides the assistance call (ideal where a disabled toilet is adjacent to a refuge lobby).

When a call is made, the over-door and cancel units emit a two tone siren with the "Halo" flashing; when the call is acknowledged from the EVCS controller, the "Halo" on these units lights steadily and the tone double-beeps every 15 seconds to reassure the caller help is on the way.

As the Emergency Assist Alarm is connected to a Technoswitch Master Station, the plates and cables are fully end-of-line monitored and battery backed.

The Emergency Assist Alarm plates are supplied with a brushed stainless finish and a blue halo to aid location.

APPLICATION

The Emergency Assist Alarm is an emergency assist alarm system as defined in BS 8300. It is designed to be used by the public as an emergency assistance alarm call point, and integrated into the EVCS as allowed by BS 5839-9:2011.

The Emergency Assist Alarm kit can be expanded using additional plates making it suitable for accessible bedrooms at the locations described in BS 8300.

FEATURES

- Compact Design
- BS 8300 "Acknowledge" Feature
- High Volume Sounder
- Blue "Halo"
- Flush or Surface Mounting
- Braille Enhanced Cancel Button
- Stainless Steel

APPROVALS

- EMC: EN 55103-1, EN 55103-2
- LVD: EN 60950
- Product Family: BS 5839-9, BS 8300



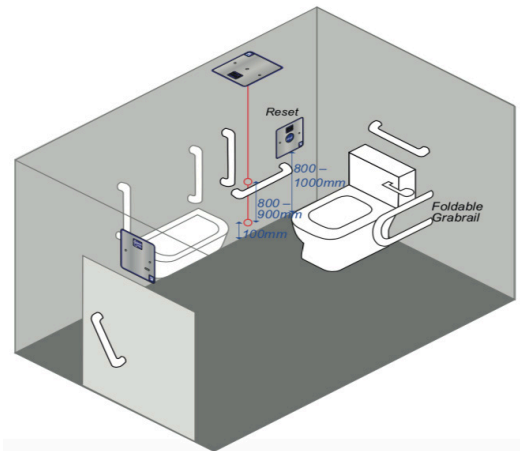
EMERGENCY VOICE EVACUATION SYSTEMS (EVCS) EMERGENCY ASSIST ALARM

MOUNTING THE UNIT

The Emergency Assist Alarm components are not supplied with back-boxes. For surface mount installations add back-box VS-EVS-ACBBS, and for flush mount add back-box VS-EVS-ACBBF.

To accept cable glands, the back-box needs to be 35 mm deep including metal clad surface types and plastic plasterboard liner boxes. The units should be mounted as shown below to comply with the requirements of BS 8300-2:2018.

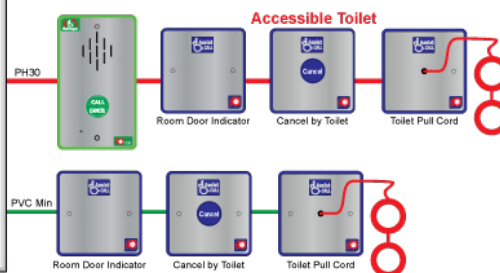
When flush mounting, use the back-box manufacturer's recommended cut-out.



CONNECTIONS

CABLE KEY

1x 2-Core 1.5 mm CSA
PH30 Standard Fire Resistant Cable
1x 2-Core 1 mm CSA
PVC Minimum



SPECIFICATIONS

Physical

Height	86 mm
Width	86 mm
Depth	22 mm
Weight	600 g
Material	Stainless Steel/Acrylic
Finish	Brushed

Recommended Cables

Type	PVC or PH30 Standard Fire Resistant Cable (If sharing with VS-EVS-OSB)
Cores	2-core 1 mm CSA
Distance	500 m

ORDERING INFORMATION

Product Code Product Description

VS-EVS-ACWC	Technoswitch ASSIST CALL Alarm WC System (excluding Back-box)
VS-EVS-ACBBF	Plastic Flush Mount Back-box for ASSIST CALL Stations (87 x 87 x 35 mm)
VS-EVS-ACBBS	Steel Surface Mount Back-box for ASSIST CALL Stations (87 x 87 x 35 mm)

Please refer to the current Technoswitch Price List for all spares and peripherals.

• **DISCLAIMER:** Although the contents of our product literature have been prepared with the greatest care, Technoswitch can accept no liability whatsoever for any direct or indirect damages of any kind that may arise due to either errors or omissions in them, or amendments to products or other specifications following publication.

© Technoswitch (Pty) Ltd



HEAD OFFICE — JOHANNESBURG
Cussonia Park, 3 Ridge Road, Laser Park, Johannesburg T +27 (0)11 794 9144 E info@technoswitch.co.za
CAPE TOWN T +27 (0)21 948 4575 ■ **DURBAN** T +27 (0)31 266 8843

www.technoswitch.co.za

Document: DS VS-EVS-ACWC 191001 E & OE