



HEAT & SMOKE DETECTORS – CONVENTIONAL SENSOMAG DETECTORS

SENSOMAG FIXED TEMPERATURE DETECTORS



SensoMAG-HA2S and -HBS are fixed temperature detectors with digital processing algorithm. The HA2S is designed to detect temperatures above 60°C (class A2S), and the HBS to detect temperatures above 75°C (class BS), according to EN54-5.

- Both are suitable for environments where sudden large temperature changes are considered as normal, rooms with high concentration of vaporous, exhaust gases, dust, etc., such as kitchens, garages, boiler rooms or other places where it is not convenient to install fire alarm optical smoke detectors.

SENSOMAG RATE-OF-RISE DETECTOR

SensoMAG-HA1R is a rate-of-rise temperature detector with digital processing algorithm. The detector is designed to detect temperatures above 58°C (class A1R, according EN54-5).

- SensoMAG-HA1R is suitable for applications for locations where different ambient temperatures occur (eg. mechanical workshops, tool rooms, etc.). The innovative design makes it particularly suitable anywhere where dust, dirt (eg. sawmills) or high humidity (eg. wet cells) could affect the operation of traditional detectors.



SENSOMAG OPTICAL SMOKE DETECTOR

SensoMAG-O is an optical smoke detector with digital processing algorithm. The detector is designed to detect smoke in the very early stage of the fire situation.

- SensoMAG-O is a high sensitive optical smoke detector. It is suitable for applications where early detection of smoke or fire is with great importance, for example office buildings, supermarkets, schools, etc.



SENSOMAG MULTI-CRITERIA DETECTOR



SensoMAG-MS is a combined (optical smoke and rate-of-rise) detector with digital processing algorithm. The integrated automatic drift compensation reduced significantly the false alarms.

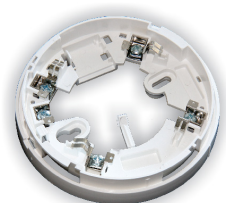
- SensoMAG-MS is a combined smoke and rate-of-rise temperature detector. It is the right choice for applications where the early detection of a fire situation is with great importance and high reliability is needed, eg. timbered construction, museums, and hotel rooms.

SENSOMAG STANDARD BASE

The SensomAG-B is a standard base for the SensomAG conventional detector series. The base features a low profile design and reliable contact system.

The detector can be locked to the base for extra security.

- Refer to Data Sheet *DS SensomAG-B* for the base's Technical Specifications & Connection Digram.



FEATURES

- EN54 Approved
- 2 Year Warranty
- Twin LED
- Field-replaceable Elements
- Compatible with
 - ORYX Conventional Fire Panel range
 - TC800 and TC800 Plus Fire Panel ranges

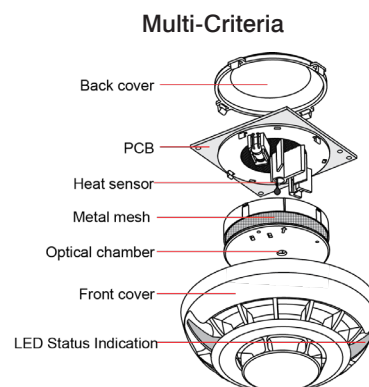
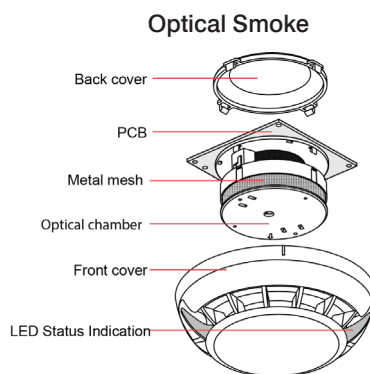
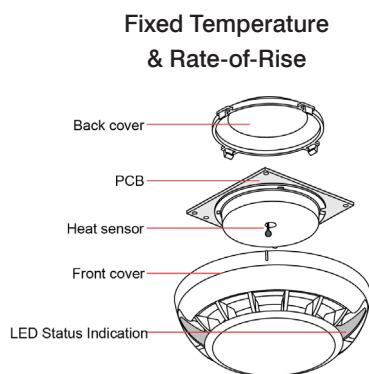




HEAT & SMOKE DETECTORS – CONVENTIONAL SENSOMAG DETECTORS

TECHNICAL SPECIFICATIONS

| | Fixed Temperature HA2S & HBS | Rate-of-Rise HA1R | Optical Smoke O | Multi-Criteria MS |
|-------------------------------------------------------|---------------------------------------------|----------------------------------------|----------------------------------------|----------------------------------------|
| Operating Voltage Range | 9 - 30VDC (Nominal 12 / 24 V DC) | 9 - 30VDC (Nominal 12 / 24 V DC) | 9 - 30VDC (Nominal 12 / 24 V DC) | 9 - 30VDC (Nominal 12 / 24 V DC) |
| Average Current Consumption in Quiescent State | < 50 μ A | < 50 μ A | < 50 μ A | < 50 μ A |
| Alarm State Current: | | | | |
| – With base type B24 and B24D | 20mA / 12 30V | 20mA / 12 30V | 20mA / 12 30V | 20mA / 12 30V |
| – With base type B24RD | 33mA / 12V 49mA / 24V 57mA / 30V | 33mA / 12V 49mA / 24V 57mA / 30V | 33mA / 12V 49mA / 24V 57mA / 30V | 33mA / 12V 49mA / 24V 57mA / 30V |
| – With base type B12 | 18mA / 9V 29mA / 12V 32mA / 15V | 18mA / 9V 29mA / 12V 32mA / 15V | 18mA / 9V 29mA / 12V 32mA / 15V | 18mA / 9V 29mA / 12V 32mA / 15V |
| Class as per EN54-5 | A2S (F10) & BS (F10B) | A1R | | A1R |
| Protected Area as per EN54-5 | up to 35m ² | up to 35m ² | up to 120m ² | up to 120m ² |
| Installation Height as per EN54-5 | up to 3.5m | up to 3.5m | up to 16m | up to 16m |
| Output in alarm state at terminal RI | 20 mA (max) / -3.3 V | 20 mA (max) / -3.3 V | 20 mA (max) / -3.3 V | 20 mA (max) / -3.3 V |
| Degree of protection | IP30 | IP30 | IP30 | IP30 |
| Wire Gauge for terminals | 0.4mm ² 2.0mm ² | 0.4mm ² 2.0mm ² | 0.4mm ² 2.0mm ² | 0.4mm ² 2.0mm ² |
| Operational temperature range | -10°C +60°C | -10°C +60°C | -10°C +60°C | -10°C +60°C |
| Relative humidity resistance | (93 \pm 3)% @ 40°C | (93 \pm 3)% @ 40°C | (93 \pm 3)% @ 40°C | (93 \pm 3)% @ 40°C |
| Dimensions (incl. base) | ø 102mm, h 42mm | ø 102mm, h 42mm | ø 102mm, h 42mm | ø 102mm, h 48mm |
| Weight (incl. base) | 160 g | 160 g | 160 g | 170 g |



ORDERING INFORMATION

| Product Code | Product Description |
|-------------------|-------------------------------------------------------------|
| TE-SensoMAG-HA1R | SensoMAG ROR Heat Detector; Class A1/R (65°C) |
| TE-SensoMAG-HA2S | SensoMAG Fixed Temperature Heat Detector; Class A2/S (70°C) |
| TE-SensoMAG-HBS | SensoMAG Fixed Temperature Heat Detector; Class B/S (85°C) |
| TE-SensoMAG-MS | SensoMAG Multi-criteria Detector; Class A1/R |
| TE-SensoMAG-O | SensoMAG Optical Smoke Detector |
| TE-SensoMAG-B | SensoMAG Standard Base |
| TE-SensoMAG-RB12V | SensoMAG Base with Relay Output, 12V |
| TE-SensoMAG-LED | SensoMAG Remote Fire LED |

• **DISCLAIMER:** Although the contents of our product literature have been prepared with the greatest care, Technoswitch can accept no liability whatsoever for any direct or indirect damages of any kind that may arise due to either errors or omissions in them, or amendments to products or other specifications following publication.
© Technoswitch (Pty) Ltd



HEAD OFFICE — JOHANNESBURG
Cussonia Park, 3 Ridge Road, Laser Park, Johannesburg T +27 (0)11 794 9144 E info@technoswitch.co.za
CAPE TOWN T +21 948 4575 DURBAN T +27 (0)31 266 8843

www.technoswitch.co.za

Document: DS SensomAG Detector Range 201102 E & OE