



HEAT & SMOKE DETECTORS – INTELLIGENT XP95 DETECTORS

GENERAL DESCRIPTION

The XP95 range of intelligent addressable fire detectors uses tried and trusted technology to give the best performance, and has unique features that benefit the installer and the end-user. It is suitable for medium-to-large applications with simple installation requirements.

As it operates using digital communication, XP95 has a high immunity from corruption, and therefore often preferred in a large system where life safety is critical. XP95 products are frequently used in commercial, industrial, financial, government, IT/telecoms and healthcare applications.

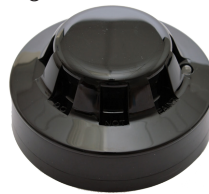
A unique, patented address mechanism, the XPERT card, ensures that the address data is stored in the base while keeping the base free of electronic parts that could be damaged during installation.

XP95 OPTICAL DETECTOR



The XP95 Optical Smoke Detector operates on the light scatter principle and is ideal for applications where slow-burning or smouldering fires are likely.

The detector uses an internal pulsing infrared LED and a photo-diode at an obtuse angle. In clear air conditions the photo-diode in the XP95 detector receives no light from the LED and produces a corresponding analogue signal. The signal increases when smoke enters the chamber and light is scattered onto the photo-diode. The optical smoke detector has a clear indicator LED which emits red light when the detector is in alarm.



- Responds well to slowburning, smouldering fires
- Well-suited to bedrooms and escape routes

XP95 HEAT DETECTORS



The XP95 Heat Detector is distinguishable from the smoke detectors by its low air-flow resistance case which allows good contact between the sensing thermistor and the surrounding air.

The detector monitors temperature by using a single thermistor which provides a count output proportional to the external air temperature.

The XP95 range features two heat detectors, standard and high temperature –

- The standard heat detector is classified as an A2S device and will report an alarm at 55°C.
- The high-temperature detector, classified as a CS device, will report an alarm at 90°C.
- Ideal in environments that are dirty or smoky under normal conditions
- Well-suited to warehouses, loading bays and car parks



FEATURES

- Alarm Flag for fast alarm reporting
- Alarm Address for fast location of alarm
- XPERT card addressing
- Electronics-free base
- Easy installation
- Elegant design
- Unaffected by wind or atmospheric pressure
- XP95, Discovery and CoreProtocol® compatible





HEAT & SMOKE DETECTORS – INTELLIGENT XP95 DETECTORS

XPERT CARD

The XPERT card is a unique, patented addressing method whereby the address is set by simply removing the 'pips' on the card according to a chart supplied with the base. The coded card is then inserted into the side of the base where it locks into position. The XPERT card simplifies and speeds up the installation and commissioning.



BASES



MOUNTING BASE

All detectors in the XP95 range fit the Intelligent Mounting Base (AP-XP-B). The mounting base is a low insertion force base with stainless steel contacts for the detector terminals.



HEATER BASE

The Intelligent Heater Base is designed to be used in cold climates where environmental conditions could result in either icing or condensation affecting the operation of detectors.

It is recommended that the heater base be used in conjunction with either a Waterproof Base Cover or Deckhead Mounting Box to minimise moisture ingress.



ISOLATING BASE

The Isolating Base senses and detects short-circuit faults on XP95 loops and spurs.

LOW POWER RELAY BASE

The Intelligent Low Power Relay Base incorporates a low power relay to control field equipment.



SPECIFICATIONS

Typical at 23°C and 24 V DC, unless otherwise stated

	Optical AP-XP-O	Heat – AS2 AP-XP-H	Heat – CS AP-XP-HTH
Size of Device in Base	50 x 100	50 x 100	50 x 100
Supply Voltage	17–28VDC	17–28VDC	17–28VDC
Quiescent Current	340 μ A	250 μ A	250 μ A
Normal Surge Current	1 mA	1 mA	1 mA
Alarm Indication	Red LED/ Clear in quiescent state	Red LED	Red LED
Alarm LED Current	4 mA	2 mA	2 mA
Operating Temperature (no icing)	-20 to 60°C	-20 to 70°C	-20 to 70°C
Humidity (no condensation)	0-95 % RH	0-95 % RH	0-95 %
Max Speed	Unaffected	Unaffected in fixed temp use	Unaffected in fixed temp use
Compliance	CPR & LPCB	CPR & LPCB	CPR, LPCB, BOSEC, CCMG & SBSC

ORDERING INFORMATION

Product Code	Product Description	Product Code	Product Description
AP-XP-O	XP95 Optical Smoke Detector	AP-XP-B	XP95 Mounting Base
AP-XP-OB	XP95 Optical Smoke Detector – Black	AP-XP-BB	XP95 Mounting Base – Black
AP-XP-H	XP95 Fixed Temp Heat Detector Class A2/S (55°C)	AP-XP-BI	XP95 Isolating Base
AP-XP-HTH	XP95 Fixed Temp Heat Detector Class C/S (90°C)	AP-XP-BH	XP95 Heated Base
		AP-XP-BR	XP95 Low Power Relay Base
		AP-XP-AT	XP95 Blank XPERT Card

• **DISCLAIMER:** Although the contents of our product literature have been prepared with the greatest care, Technoswitch can accept no liability whatsoever for any direct or indirect damages of any kind that may arise due to either errors or omissions in them, or amendments to products or other specifications following publication.
© Technoswitch (Pty) Ltd



HEAD OFFICE — JOHANNESBURG
Cussonia Park, 3 Ridge Road, Laser Park, Johannesburg **T** +27 (0)11 794 9144 **E** info@technoswitch.co.za
CAPE TOWN T +21 948 4575 **DURBAN T** +27 (0)31 266 8843

www.technoswitch.co.za

Document: DS-XP95 Detector Range 201111 E & OE