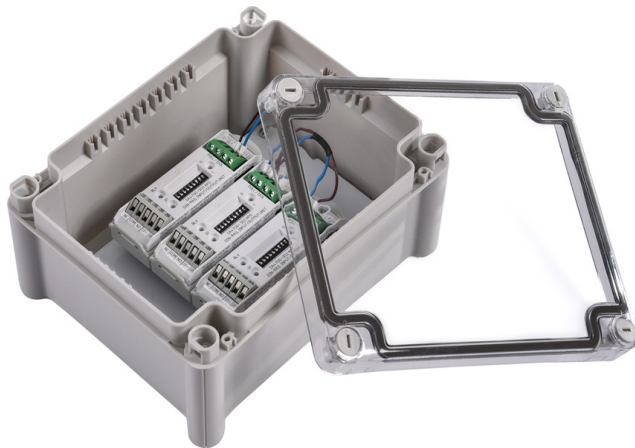




INTERFACES - INTELLIGENT

## 3-CHANNEL DIN RAIL INPUT/OUTPUT UNIT



3 CHANNEL DIN RAIL  
INPUT/OUTPUT UNIT

### DESCRIPTION

The TS-3IO-DIN is made up of three Apollo Intelligent DIN Rail Input/Output Units (Technoswitch part number AP-SADIN-IO) housed in a polycarbonate enclosure with a transparent lid.

The three AP-SADIN-IO are pre-wired in series to simplify on-site installation.

The TS-3IO-DIN is the perfect replacement for the discontinued XP95 Three Channel I/O unit (Technoswitch part number AP-XPI-IO3).

### FEATURES

- Improved design for ease of wiring meaning faster installation
- Contains controllable isolator\*
- Address range 1 – 254\*
- Nine pre-configured modes, including compatibility mode from XP95/Discovery to CoreProtocol® systems\*
- Fail-safe mode (meets BS 7273-4 requirements)
- Configurable input styles\*
- Earth fault monitoring\*

**Note:** \*CoreProtocol® enabled systems feature only.

Please check with Technoswitch for availability.



**INTERFACES - INTELLIGENT**

## **3-CHANNEL DIN RAIL INPUT/OUTPUT UNIT**

### **SPECIFICATIONS**

Supply Voltage	17-35 V DC
Protocol	5-13 V peak to peak
Power-up surge current	900 $\mu$ A
Quiescent current	500 $\mu$ A
Max current LEDs On	3.5 mA
Max current LEDs disabled	500 $\mu$ A
Weight	49 g

### **ORDERING INFORMATION**

Product Code	Product Description
TS-3IO-DIN	3 Channel DIN Rail I/O Unit – Housed with transparent lid

• **DISCLAIMER:** Although the contents of our product literature have been prepared with the greatest care, Technoswitch can accept no liability whatsoever for any direct or indirect damages of any kind that may arise due to either errors or omissions in them, or amendments to products or other specifications following publication.

© Technoswitch (Pty) Ltd

#### **HEAD OFFICE — JOHANNESBURG**

Cussonia Park, 3 Ridge Road, Laser Park, Johannesburg

**JOHANNESBURG** T +27 (0)11 794 9144 E [info@technoswitch.co.za](mailto:info@technoswitch.co.za)

**DURBAN** T +27 (0)31 266 8843 E [info.dbn@technoswitch.co.za](mailto:info.dbn@technoswitch.co.za) **CAPE TOWN** T +27 (0)21 948 4575 E [info.ct@technoswitch.co.za](mailto:info.ct@technoswitch.co.za)

**[www.technoswitch.co.za](http://www.technoswitch.co.za)**